

# FlexiPanels® - FP3

FP3102



FP3070



FP3043



FP3035



*High performance low cost HMIs*

## Features

- Great value in a high quality color display!
- 3.5" to 10.2" TFT color display with touch screen
- Slim design - minimal space behind the panel is required
- Two serial communication interfaces (one RS 232 and one RS 232/485)
- Optional Ethernet port
- One USB programming port
- One USB Host port for program downloads and data log uploads
- Supports horizontal and vertical display orientation
- Front panel mounting with IP 66 rating
- Multi language support with true type Windows fonts
- CE, UL Class 1 Div 2

# Model Comparison

Models	FP3035T-24	FP3043T	FP3043TN	FP3070T	FP3070TN	FP3102T	FP3102TN
Display	3.5" HVGA Color TFT	4.3" WQVGA Color TFT	4.3" WQVGA Color TFT	7" WVGA Color TFT	7" WVGA Color TFT	10.2" WVGA Color TFT	10.2" WVGA Color TFT
Resolution	480x320 Pixels	480x272 Pixels	480x272 Pixels	800x480 Pixels	800x480 Pixels	800x480 Pixels	800x480 Pixels
Backlight	LED Backlight	LED Backlight	LED Backlight	LED Backlight	LED Backlight	LED Backlight	LED Backlight
CPU	32-bit RISC processor	32-bit RISC processor	32-bit RISC processor	32-bit RISC processor	32-bit RISC processor	32-bit RISC processor	32-bit RISC processor
Memory	Up to 16.5MB	Up to 128MB	Up to 128MB	Up to 128MB	Up to 128MB	Up to 128MB	Up to 128MB
Screen Memory	Up to 16MB	Up to 48MB	Up to 48MB	Up to 48MB	Up to 48MB	Up to 48MB	Up to 48MB
Historical Alarms	20 Alarms	2700 Alarms	2700 Alarms	2700 Alarms	2700 Alarms	2700 Alarms	2700 Alarms
Retentive Memory	1400 Words (EEPROM)	22000 Words (EEPROM)	22000 Words (EEPROM)	22000 Words (EEPROM)	22000 Words (EEPROM)	22000 Words (EEPROM)	22000 Words (EEPROM)
Data Log	NA	Up to 20 MB	Up to 20 MB	Up to 20 MB	Up to 20 MB	Up to 20 MB	Up to 20 MB







## Serial Communication

Number of ports	2#	2#	2#	2#	2#	2#	2#
Com1	RS232	RS232	RS232	RS232 / RS485	RS232 / RS485	RS232 / RS485	RS232 / RS485
Com2	RS485	RS485	RS485	RS232 / RS485	RS232 / RS485	RS232 / RS485	RS232 / RS485

## USB Interfaces

USB Device	1 USB Device Type B port for programming	1 USB Device Type B micro port for programming	1 USB Device Type B micro port for programming	1 USB Device Type B micro port for programming	1 USB Device Type B micro port for programming	1 USB Device Type B micro port for programming	1 USB Device Type B micro port for programming
USB Host	NA	1 USB Host port	1 USB Host port	1 USB Host port	1 USB Host port	1 USB Host port	1 USB Host port

## SD Card Support

Type	NA	NA	microSD HC	NA	microSD HC	NA	microSD HC
Capacity	NA	NA	High Capacity (4GB to 32GB)	NA	High Capacity (4GB to 32GB)	NA	High Capacity (4GB to 32GB)
Speed Class	NA	NA		NA		NA	
UHS Speed Class	NA	NA		NA		NA	

Ethernet Interface	NA	NA	One 10/100 Mbps	NA	One 10/100 Mbps	NA	One 10/100 Mbps
RTC	Yes	Yes	Yes	Yes	Yes	Yes	Yes

Power Supply	12/24VDC (±10%)	24VDC (±15%)	24VDC (±15%)	24VDC (±15%)	24VDC (±15%)	24VDC (±15%)	24VDC (±15%)
Operating Temperature	0° to 60° C	0° to 60° C	0° to 60° C	0° to 60° C	0° to 60° C	0° to 60° C	0° to 60° C
Storage Temperature	-20° to 85° C	-20° to 85° C	-20° to 85° C	-20° to 85° C	-20° to 85° C	-20° to 85° C	-20° to 85° C
Humidity	10 to 85% non condensing	10 to 85% non condensing	10% to 85% non condensing	10% to 85% non condensing	10% to 85% non condensing	10% to 85% non condensing	10% to 85% non condensing
Approvals	CE, UL Class I Div 2	CE, UL Class I Div 2	CE, UL Class I Div 2	CE, UL Class I Div 2	CE, UL Class I Div 2	CE, UL Class I Div 2	CE, UL Class I Div 2
Mounting	Front Panel Mounting, IP66, NEMA 4X rated	Front Panel Mounting, IP66, NEMA 4X rated	Front Panel Mounting, IP66, NEMA 4X rated	Front Panel Mounting, IP66, NEMA 4X rated	Front Panel Mounting, IP66, NEMA 4X rated	Front Panel Mounting, IP66, NEMA 4X rated	Front Panel Mounting, IP66, NEMA 4X rated
Dimensions (mm)	107W x 69H x 25.4D (Drawing A)	120W x 89H x 31.5D (Drawing B)	120W x 89H x 31.5D (Drawing C)	186W x 138H x 31D (Drawing D)	186W x 138H x 31D (Drawing E)	268W x 190H x 33D (Drawing F)	268W x 190H x 33D (Drawing G)

# FP3035 and FP3043 support One DB9 port that supports RS232 and RS485 levels on different pins. "Y" type cable can be used for separate RS232 and RS485 levels simultaneously

# HMI Software Features

LINE / RECTANGLE / ROUNDED RECTANGLE / SQUARE / ELLIPSE /



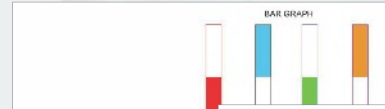
**Graphical Objects**  
FlexiSoft® supports various graphical objects like Rectangle / Rounded Rectangle / Ellipse / Square and Line.

**Multiple Languages**

रेणू इलेक्ट्रॉनिक्स

मराठी

**Advanced Objects**  
FlexiSoft® supports most popular advanced objects like Bargraphs, Multiple Bargraphs, Analog Meter Real Time / Historical Alarms, Buttons.

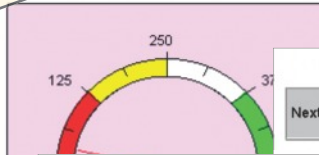


**Multiple Bargraphs**

**Keypad**



**Analog Meter**



**BUTTONS**



**REAL TIME / HISTORICAL ALARMS**

0000	0000	0000	0000	0000	0000	0000	0000	0000	0000
0000	0000	0000	0000	0000	0000	0000	0000	0000	0000
0000	0000	0000	0000	0000	0000	0000	0000	0000	0000
0000	0000	0000	0000	0000	0000	0000	0000	0000	0000
0000	0000	0000	0000	0000	0000	0000	0000	0000	0000
0000	0000	0000	0000	0000	0000	0000	0000	0000	0000
0000	0000	0000	0000	0000	0000	0000	0000	0000	0000
0000	0000	0000	0000	0000	0000	0000	0000	0000	0000
0000	0000	0000	0000	0000	0000	0000	0000	0000	0000
0000	0000	0000	0000	0000	0000	0000	0000	0000	0000

**Windows Fonts for Data Entry and Data Display**

Arial, 12pt  
Arial, 14pt  
Arial, 18pt

**Windows Font for Display Data and Data Entry**  
FlexiSoft® supports True type Windows font for Data Entry and Data Display objects. Supported fonts are 'Arial', 'Tahoma' 'Times New Roman'.

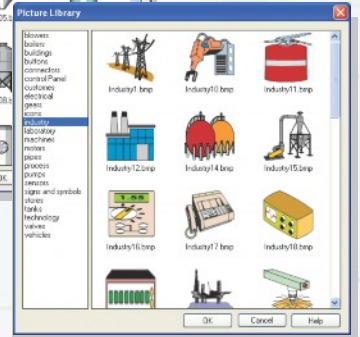
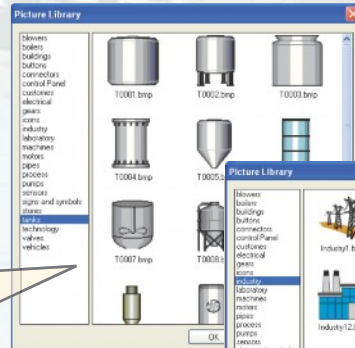
**Windows Fonts for Data Entry and Data Display**

Times New Roman, 22pt  
30pt  
42pt  
50pt  
62pt

Tahoma

72pt  
90pt

**Picture Library**  
FlexiSoft® provides rich picture library. It includes many popular image categories widely used for industrial application development.



**Real Time Clock**



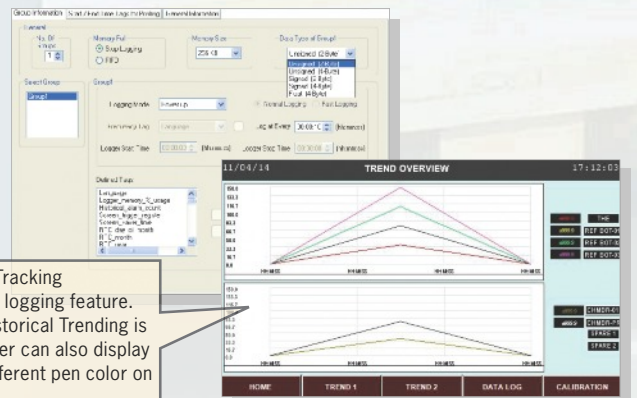
Date: 30/08/13



Time: 16:44:46

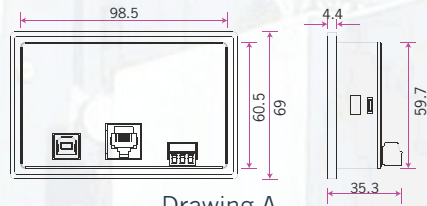
Day of Week: XXX: 30/08/13

**Real Time Clock**  
Real Time Clock object helps user to display date, time and day of week.

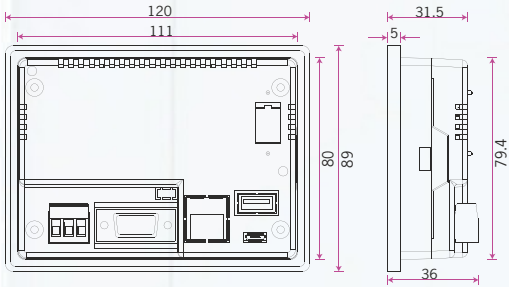


**Data Logging & Trend Tracking**  
FlexiSoft® support data logging feature. Real time as well as Historical Trending is also supported. The user can also display multiple trends with different pen color on one screen.

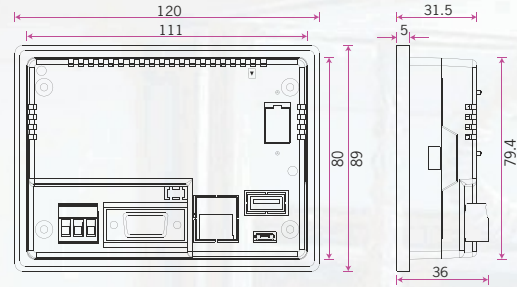
# Dimensions



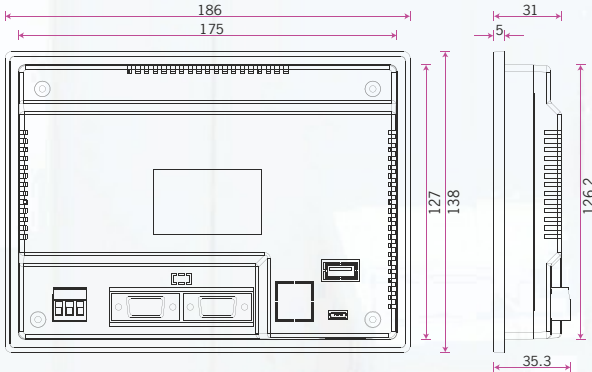
Drawing A



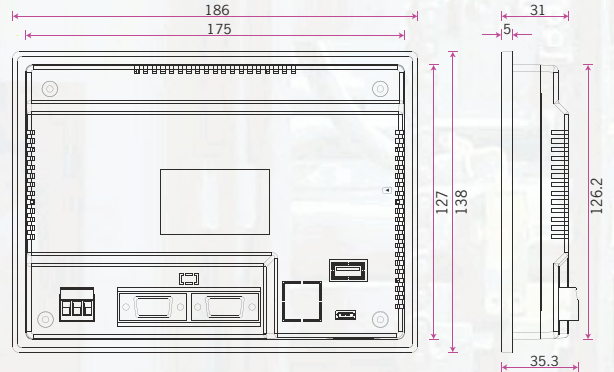
Drawing B



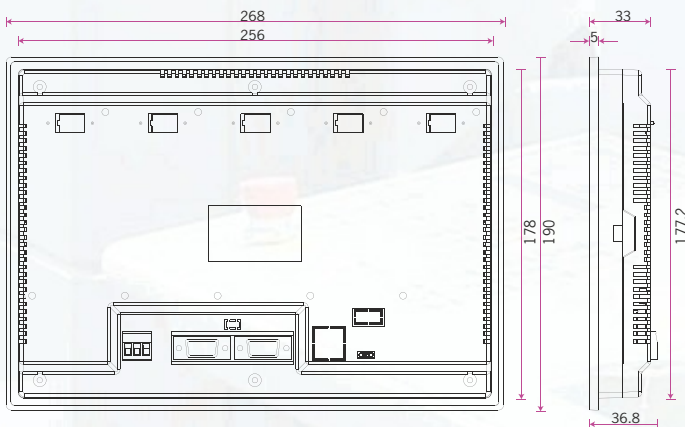
Drawing C



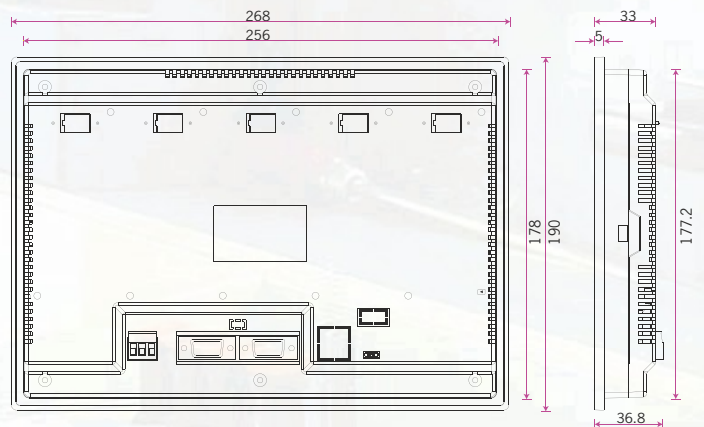
Drawing D



Drawing E



Drawing F



Drawing G



HEAD OFFICE  
 Survey No. 2/6, Baner Road,  
 Pune - 411045, India.  
 Tel : +91 20 2729 2840  
 Fax : +91 20 2729 2839  
 Email : [info@renuelectronics.com](mailto:info@renuelectronics.com)  
 Website: [www.renuelectronics.com](http://www.renuelectronics.com)

Please contact factory for more information. We welcome an opportunity to develop new, custom drivers and customized units.

An ISO 9001 : 2008 and ISO 14001 : 2004 certified company

(Specifications subject to change without prior notice.)